

my¹ne



**standard
sliding doors**

LUCE HEAVY

The Luce Heavy sliding doors are ideal for automated pedestrian access points in private and public locations: offices, shops and commercial businesses in general. They are quick and easy to install, with continuous operation, guaranteeing top performance and reliability. Available in single-leaf (up to 200 kg) or double-leaf (up to 130+130 kg) versions.



LUCE HEAVY

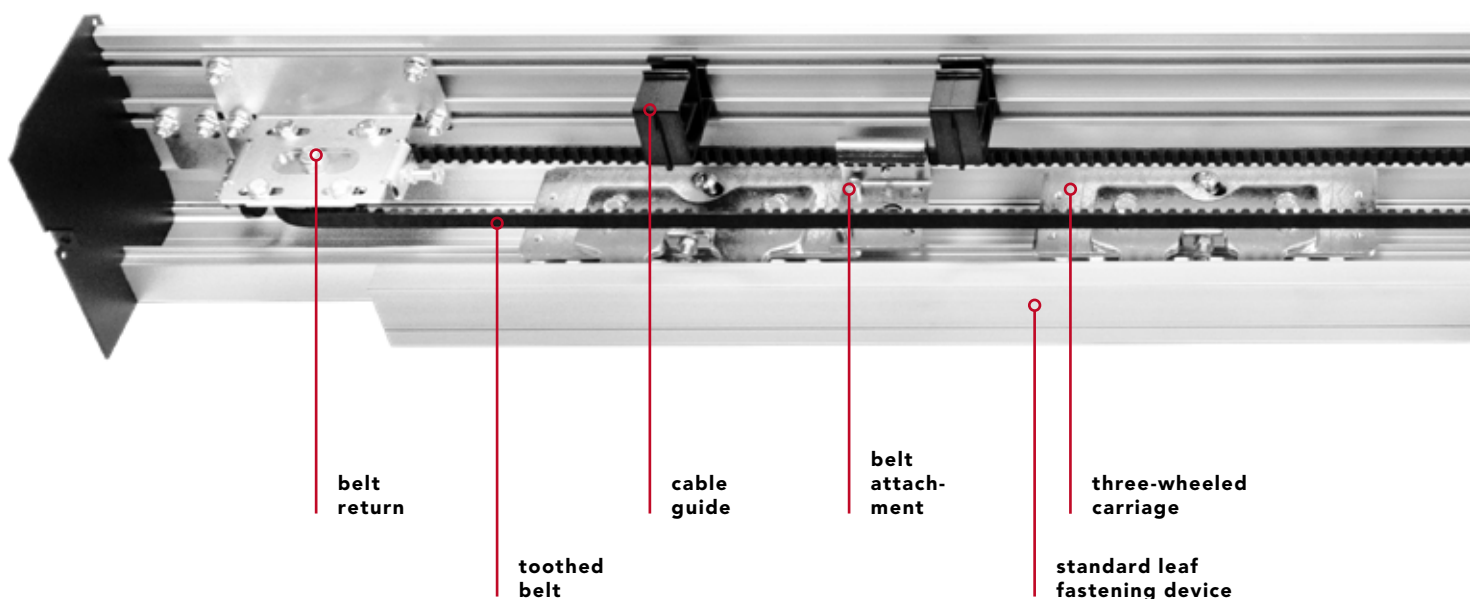


download **LUCE HEAVY**
instructions
and certificates

www.myoneautomation.com

Operator for sliding doors with three-wheeled carriage, which ensures that the doors are very stable and easy to adjust, both in height and depth.

The operator has a control unit with LED alphanumeric display, full-range switching power supply (100-240 V 50/60 Hz) and battery charger. The presence of a USB connector makes it quick and easy to update the firmware as well as to copy parameters and operating logics to a new system instantly. Continuous operation guaranteed.



technical data

power supply	full range 100÷240 Vac 50/60 Hz
power consumption	70 W
power consumption in stand-by	3 W
accessories power supply	24 Vdc = / 1 A max
maximum speed 1 door	0.8 m/s
maximum speed 2 doors	1.6 m/s
maximum load 1 door	200 kg
maximum load 2 doors	130 + 130 kg
type and frequency of use	continuous operation = 100%
operating temperature	-15°C / +50°C
protection degree	IP20
data backup memory	USB flash drive



1 leaf
max. weight
200 kg

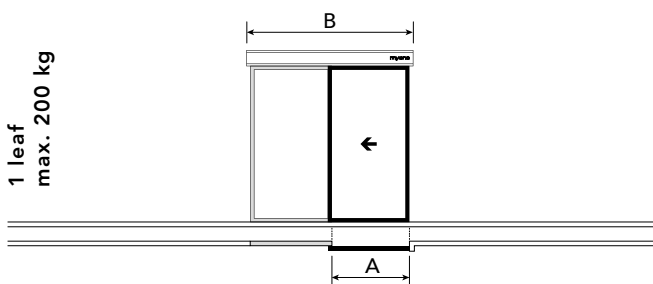


2 leaves
max. weight
130 + 130 kg

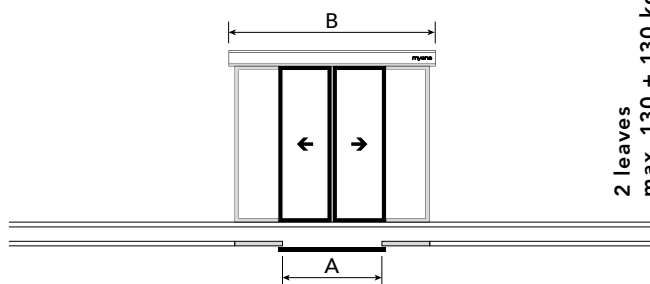


preassembled sliding doors

*The values of the passage size (A) and of the leaf are indicative and include an overlap of around 50 mm.



1 leaf
max. 200 kg



2 leaves
max. 130 + 130 kg

	A	B
LUCEH1901F	900 mm	1900 mm
LUCEH2101F	1000 mm	2100 mm
LUCEH2501F	1200 mm	2500 mm
LUCEH2901F	1400 mm	2900 mm
LUCEH3301F	1600 mm	3300 mm
LUCEH3701F	1800 mm	3700 mm
LUCEH4201F	2000 mm	4200 mm
LUCEH5001F	2450 mm	5000 mm
LUCEH6501F	3100 mm	6500 mm

	A	B
LUCEH1902F	900 mm	1900 mm
LUCEH2102F	1000 mm	2100 mm
LUCEH2502F	1200 mm	2500 mm
LUCEH2902F	1400 mm	2900 mm
LUCEH3302F	1600 mm	3300 mm
LUCEH3702F	1800 mm	3700 mm
LUCEH4202F	2000 mm	4200 mm
LUCEH5002F	2450 mm	5000 mm
LUCEH6502F	3100 mm	6500 mm

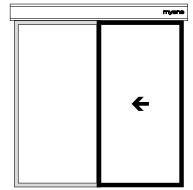
the preassembled operator is made up of:

control unit | gear motor with encoder | three-wheeled sliding carriages | anodised aluminium supporting profile and cover | belt return | mechanical stop | standard leaf fastening device | belt | cable guide | screw kit | lateral sides



kit for doors with one sliding leaf

KLUCE01F



gear motor with encoder and electronic control unit



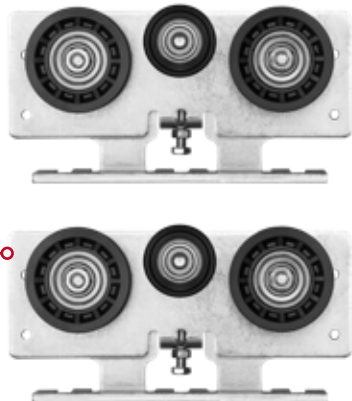
belt return



cable guides



three-wheeled sliding carriages



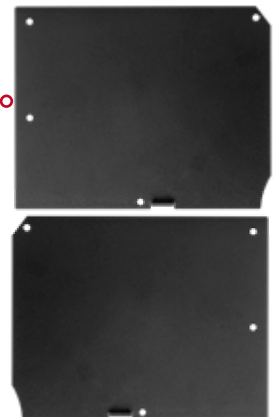
mechanical limit switch



belt connection



lateral sides



screw kit



accessories to complete the kit



01AL0001

HEAVY anodised aluminium supporting profile.
- 4.32 kg/m



01AL0002F

Anodised aluminium cover.
- 1.52 kg/m



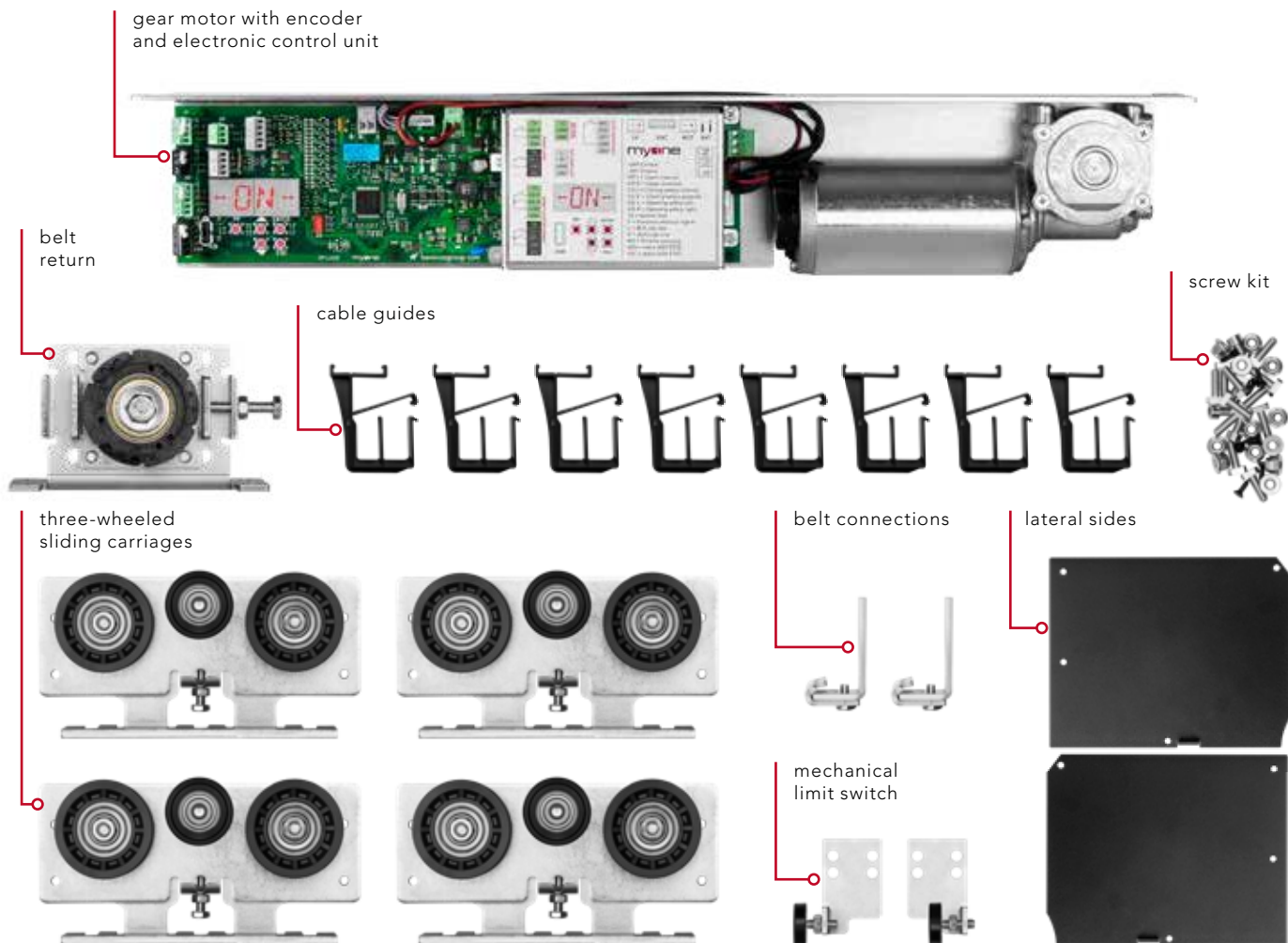
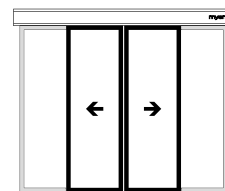
32CG0001

Belt.
- 50 m



kit for doors
with two sliding leaves

KLUCE02F



accessories to complete the kit



01AL0001

HEAVY anodised aluminium supporting profile.
- 4.32 kg/m



01AL0002F

Anodised aluminium cover.
- 1.52 kg/m



32CG0001

Belt.
- 50 m



framed door accessories - myone frame



01FE0018

Floor guide slider.

framed door accessories - commercial frame



01AL0011

Aluminium floor guide.



01FE0018

Floor guide slider.



01AL0003

Standard leaf fastening device only required for commercial framed doors. - *already included in preassembled version*

glass door accessories - fastening set for glass leaves with pre-drilled holes



99AC0004

Fastening set for glass leaf (10-12 mm) with pre-drilled holes.

- L. 1000 mm



99AC0005

Fastening set for glass leaf (10-12 mm) with pre-drilled holes.

- L. 1500 mm



99AC0006

Fastening set for glass leaf (10-12 mm) with pre-drilled holes.

- L. 2000 mm



01FE0049

Glass door slider.

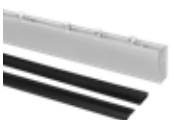
- 6 piece pack



01FE0050

Glass door stainless steel slider.

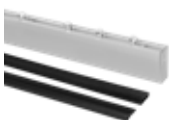
glass door accessories - fastening clamp set for glass leaves



99AC0001

Fastening clamp set for glass leaf (10-12 mm thickness).

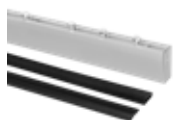
- L. 1000 mm



99AC0002

Fastening clamp set for glass leaf (10-12 mm thickness).

- L. 1500 mm



99AC0003

Fastening clamp set for glass leaf (10-12 mm thickness).

- L. 2000 mm



01FE0049

Glass door slider.

- 6 piece pack



01FE0050

Glass door stainless steel slider.

accessories



99BA0003
Emergency battery kit with wiring and bracket.



99EB0001
Electromechanical lock kit with release cord.



99EB0003
Emergency electromechanical lock kit with release cord.



99EB0006
Electromechanical lock kit for return with release cord.

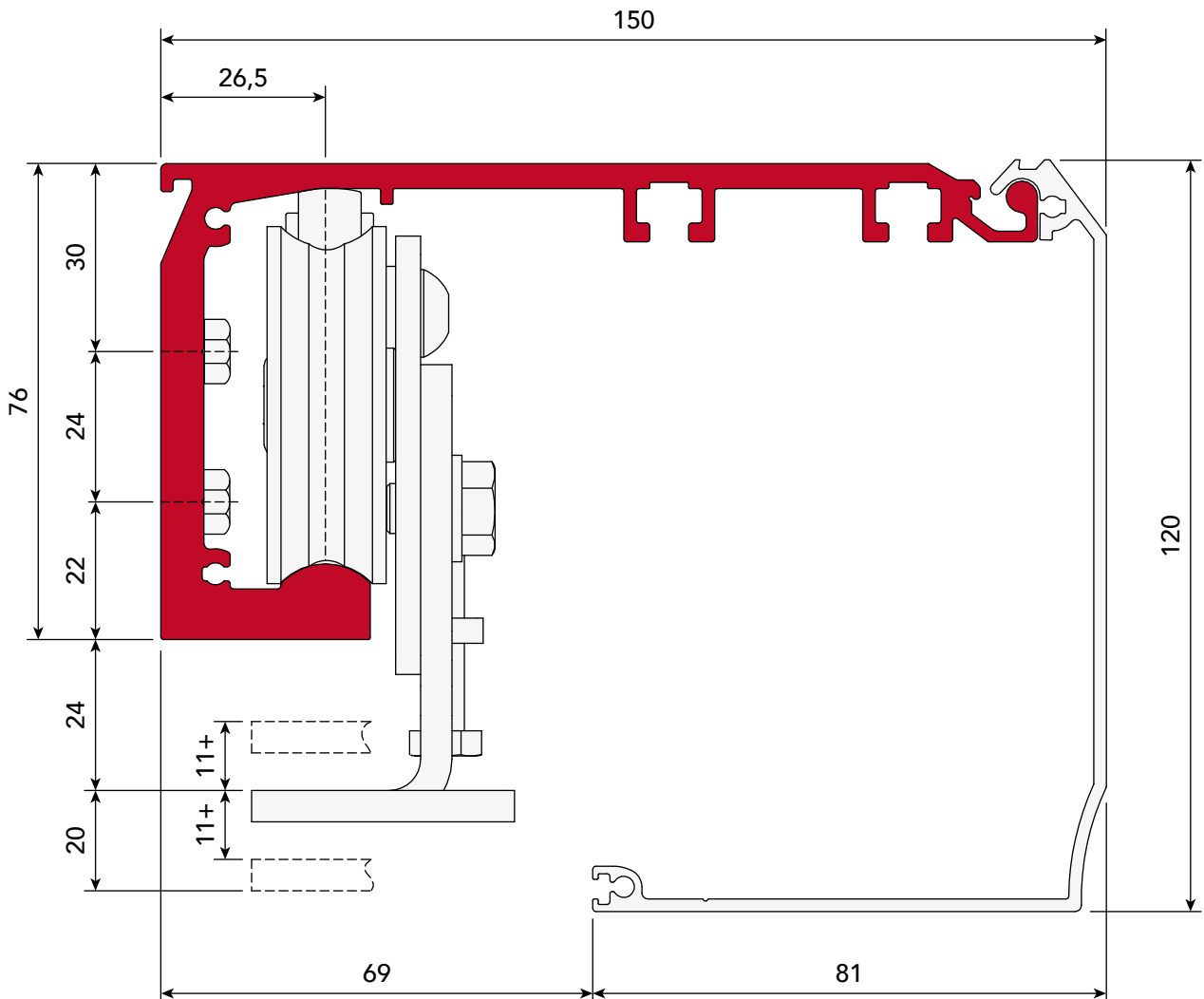


99AE0001
Opening device with elastic.



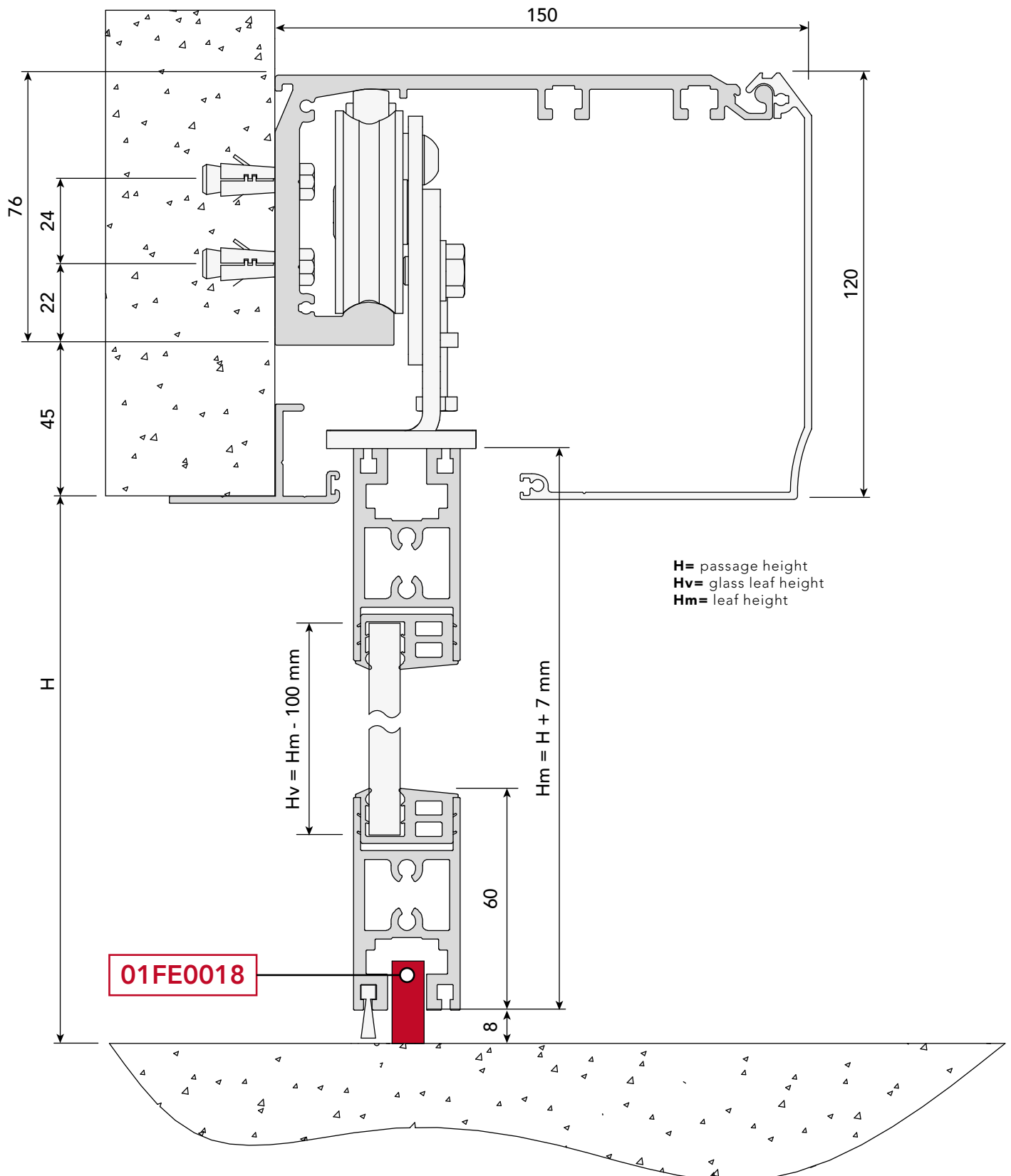
01FE0059
Safe for external release.

operator cross-section
technical drawing



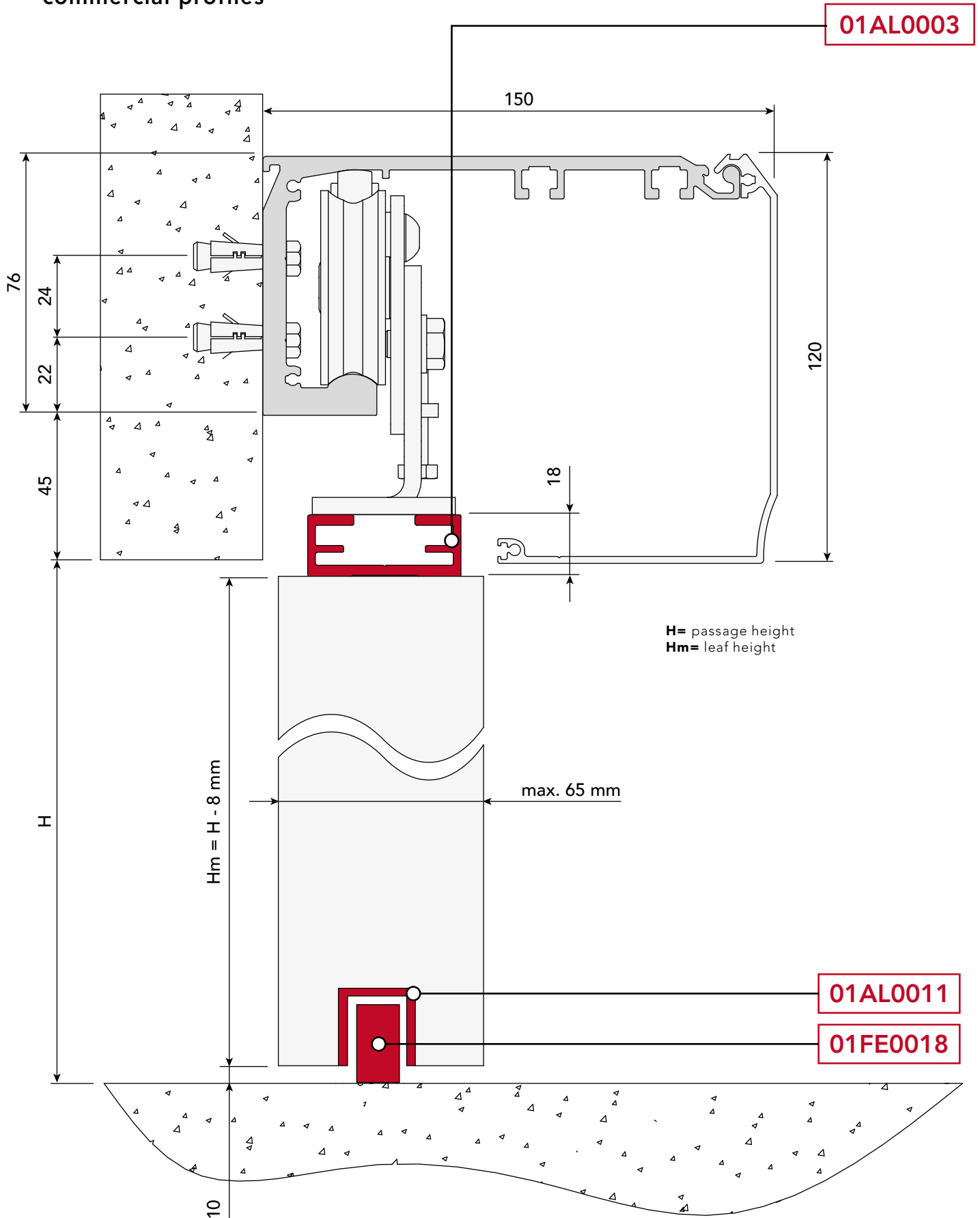


entrance with M30 myone frame



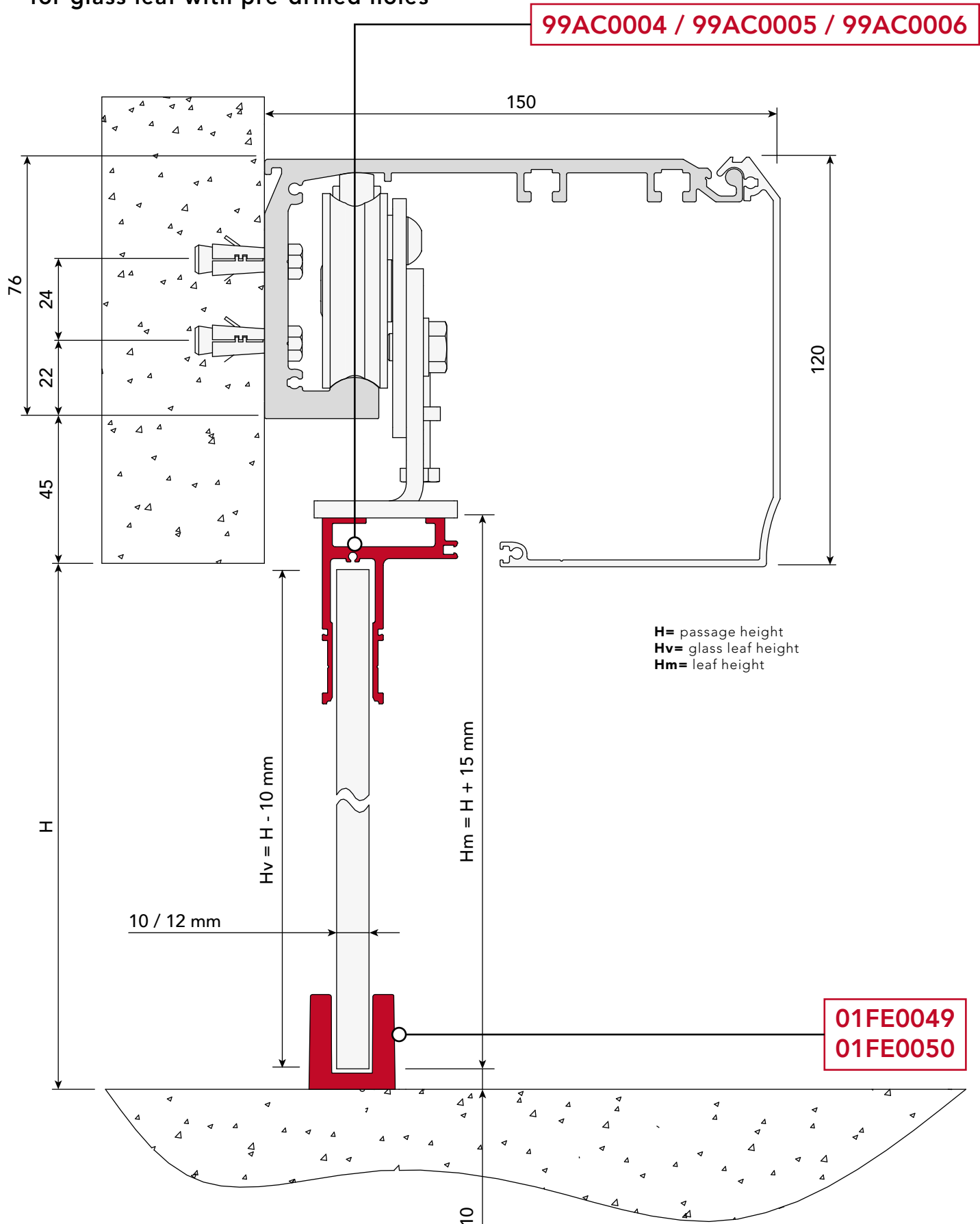


entrance with commercial profiles



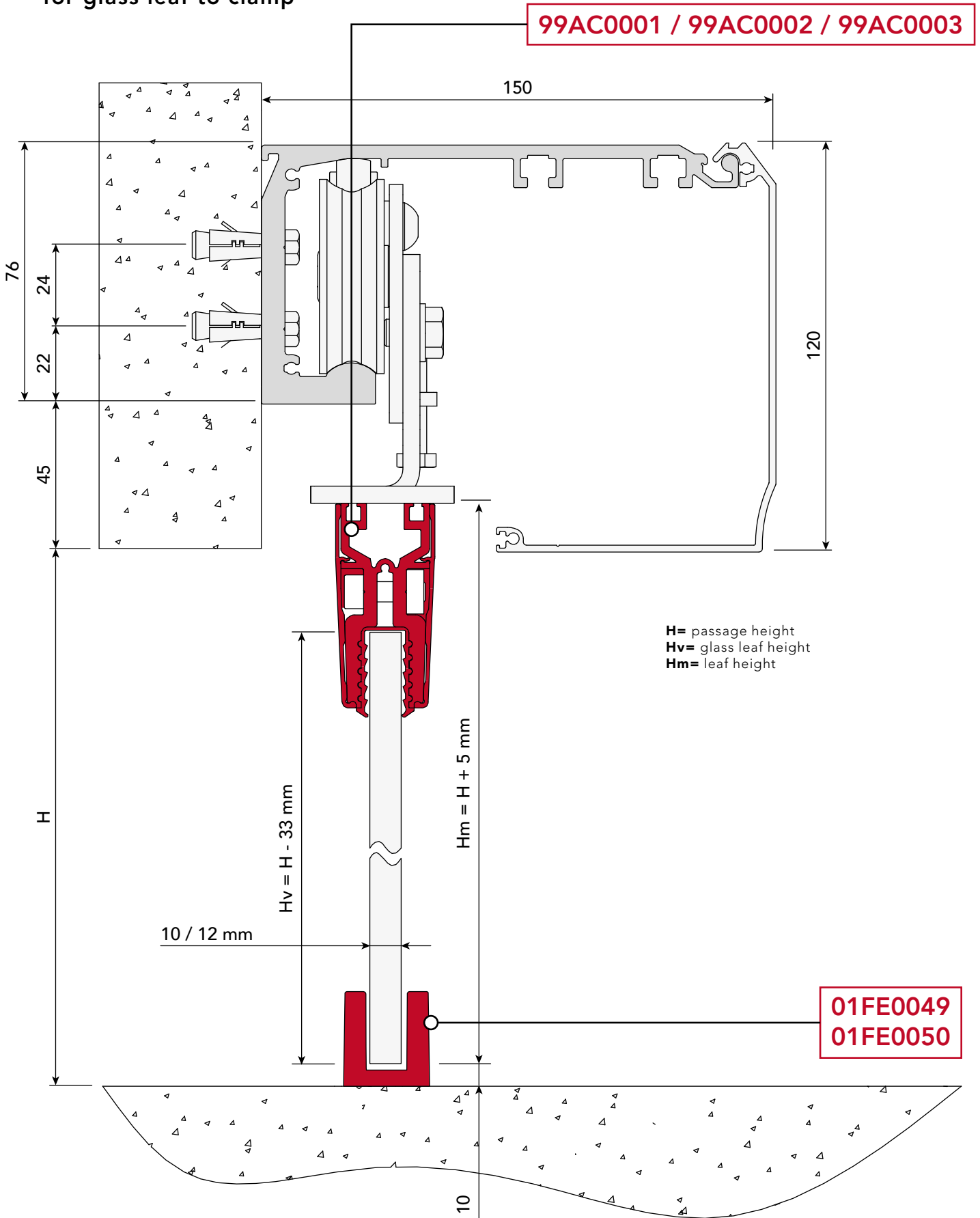


entrance with fastening set
for glass leaf with pre-drilled holes





entrance with fastening set
for glass leaf to clamp





MYONE S.r.l

Via Abbate Tommaso, 52
30020 Quarto D'Altino (VE) ITALY

T +39 0422 824384

info@myoneautomation.com
www.myoneautomation.com